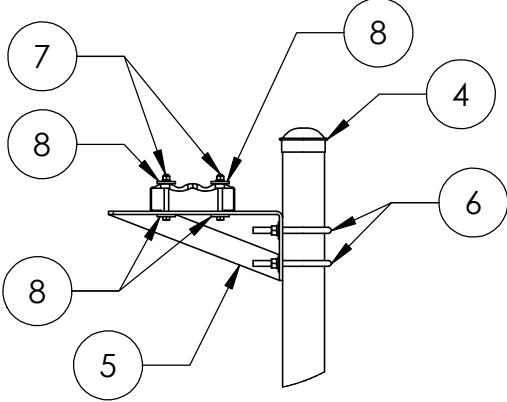
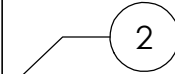
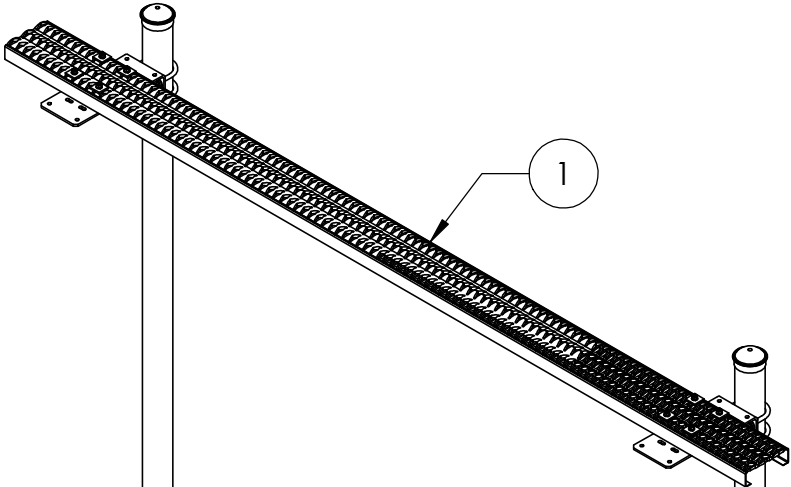
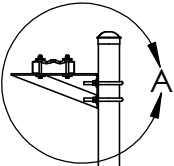
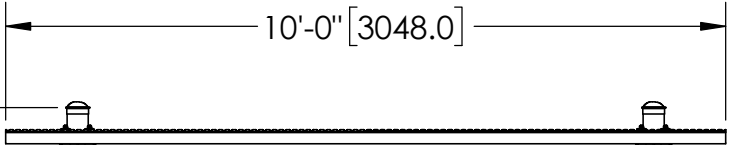
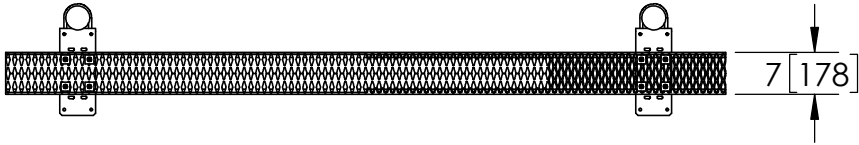


ITEM	PART NO.	DESCRIPTION	QTY.	WEIGHT
1	WBCY0710	SAFETY GRATING 7" X 10'	1	35.0 LBS
2	MF130	Ø 3.5" O.D. X 13'-4" PIPE	2	61.0 LBS
3	WBK0710BHK	HARDWARE KIT (ITEMS 4-8)	1	
4	PC034	Ø 3-1/2" O.D. PIPE CAP	2	0.74 LBS
5	WBLB123.01	12" WAVEGUIDE BRIDGE SUPPORT BRACKET	2	9.68 LBS
6	GUB4356	1/2"-13 UNC X 3-5/8" X 6" GALV U-BOLT KIT	4	0.83 LBS
7	GB03345	3/8-16 UNC X 3-1/2" GALV HEX BOLT KIT (GRADE 5)	8	0.13 LBS
8	MT-387	SQUARE WASHER, 1-1/2" X 1-1/2" W/ 7/16" HOLE	16	0.11 LBS

REVISIONS				
REV.	ZONE	DESCRIPTION	BY	DATE
A		INITIAL RELEASE	ACG	09/13/22
B		UPDATE BOM QTY	ACG	11/14/22



DETAIL A
SCALE 1 : 16



NOTES:
1. ALL METRIC DIMENSIONS ARE IN BRACKETS.

These drawings and specifications are proprietary property and may be used only for the specific purpose authorized in writing. ALL DIMENSIONS ARE IN INCHES U.O.S. TOLERANCES UNLESS OTHERWISE SPECIFIED: .X = ± .06 ANGLES ±2° .XX = ± .03 FRACTIONS ±1/32 .XXX= ± .010 REMOVE BURRS AND BREAK EDGES .005 DO NOT SCALE THIS PRINT		DRAWN BY: ACG	SHEET: 1 of 1	PART NUMBER: FM-WBK0710B
		CHECKED BY: MKV	SCALE: NTS	DESCRIPTION: 7" X 10' WAVEGUIDE BRIDGE KIT (BURIAL PIPE OR BASE SHOE)
		DATE: 09/13/22	MATERIAL: ASTM A36, A53, A568	DRAWING TYPE: ASSEMBLY DRAWING
		REVISION: B	FINISH: ASTM A123 WEIGHT: 183.52 LBS	

